

Paper Reference(s) 1BI0/2H
Pearson Edexcel Level 1/Level 2 GCSE
(9–1)

Biology
PAPER 2
Higher Tier

Diagram Booklet

Y69321A

INSTRUCTIONS

**THIS DIAGRAM BOOKLET MUST NOT
BE RETURNED WITH THE QUESTION
PAPER AT THE END OF THE
EXAMINATION.**

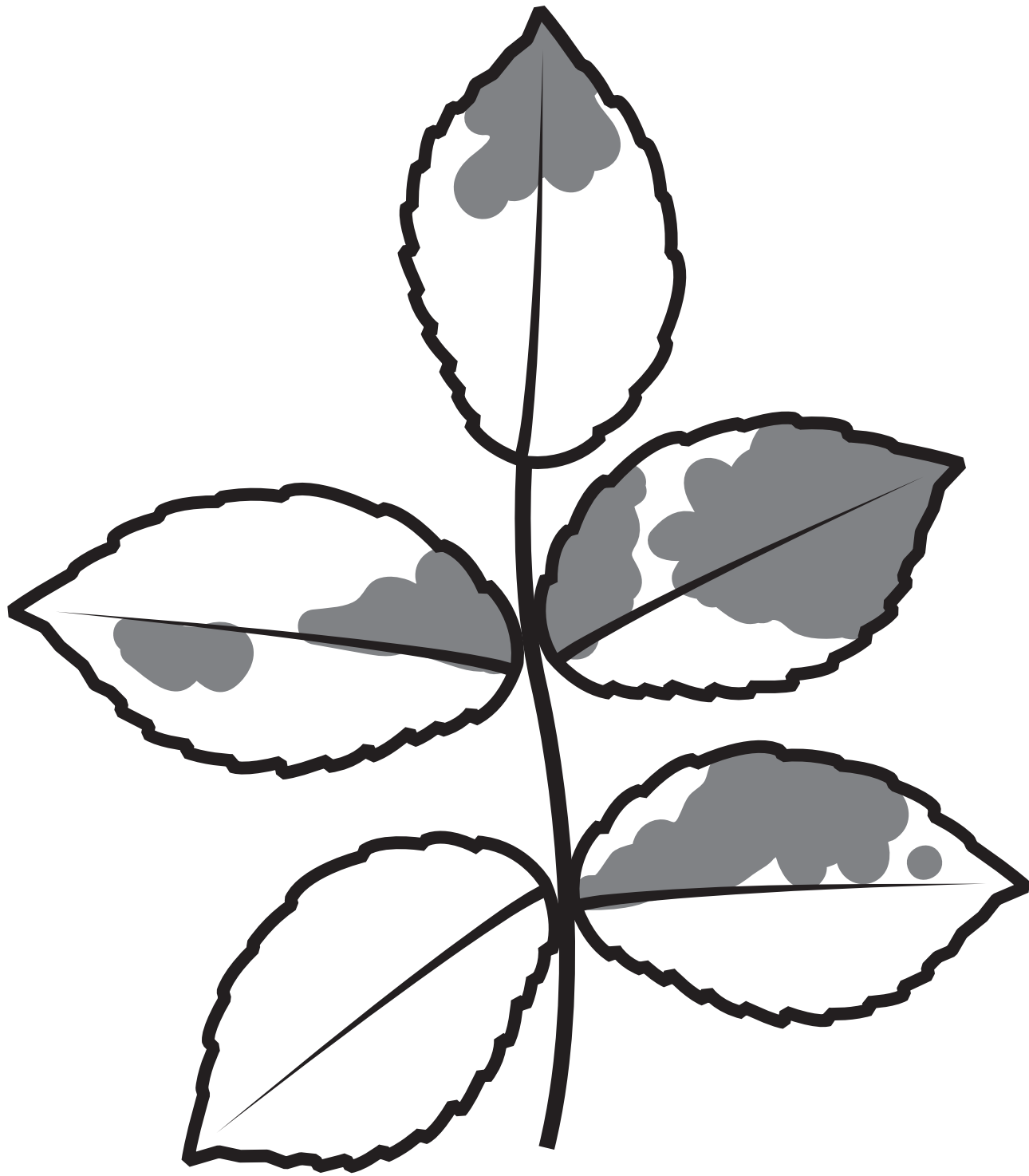
Contents

Page

| | |
|----|--------------------|
| 4 | Question 1(b) |
| 5 | Question 2(a) |
| 6 | Question 2(b) |
| 7 | Question 3(a) |
| 8 | Question 4(a) |
| 9 | Question 4(b) |
| 10 | Question 4(c)(ii) |
| 11 | Question 5(b) |
| 12 | Question 6(c) |
| 13 | Question 7(a) |
| 14 | Question 8(a)(iii) |
| 15 | Question 9(a) |
| 16 | Question 10(b)(ii) |

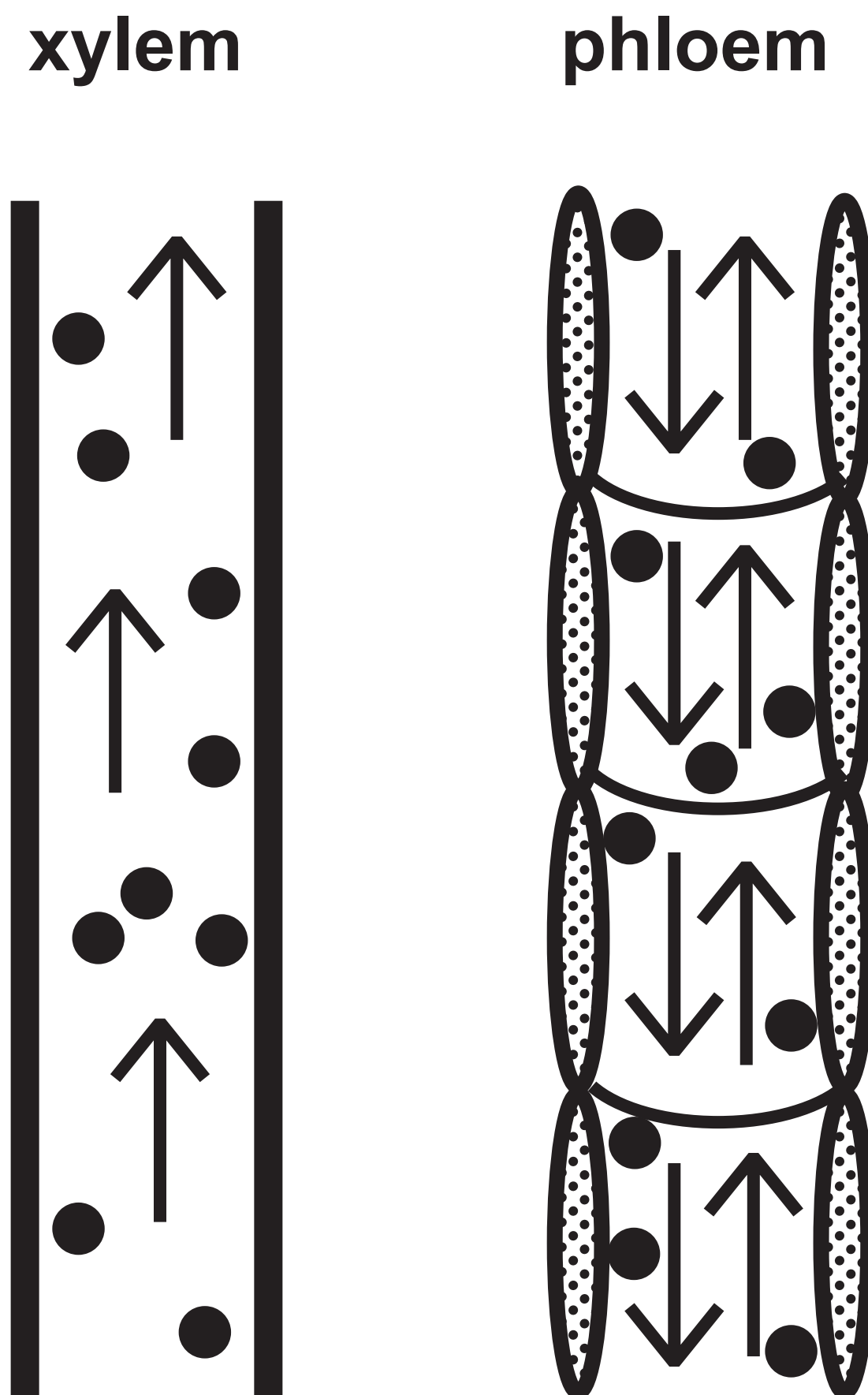
Question 1(b)

FIGURE 1



Question 2(a)

FIGURE 2



Question 2(b)

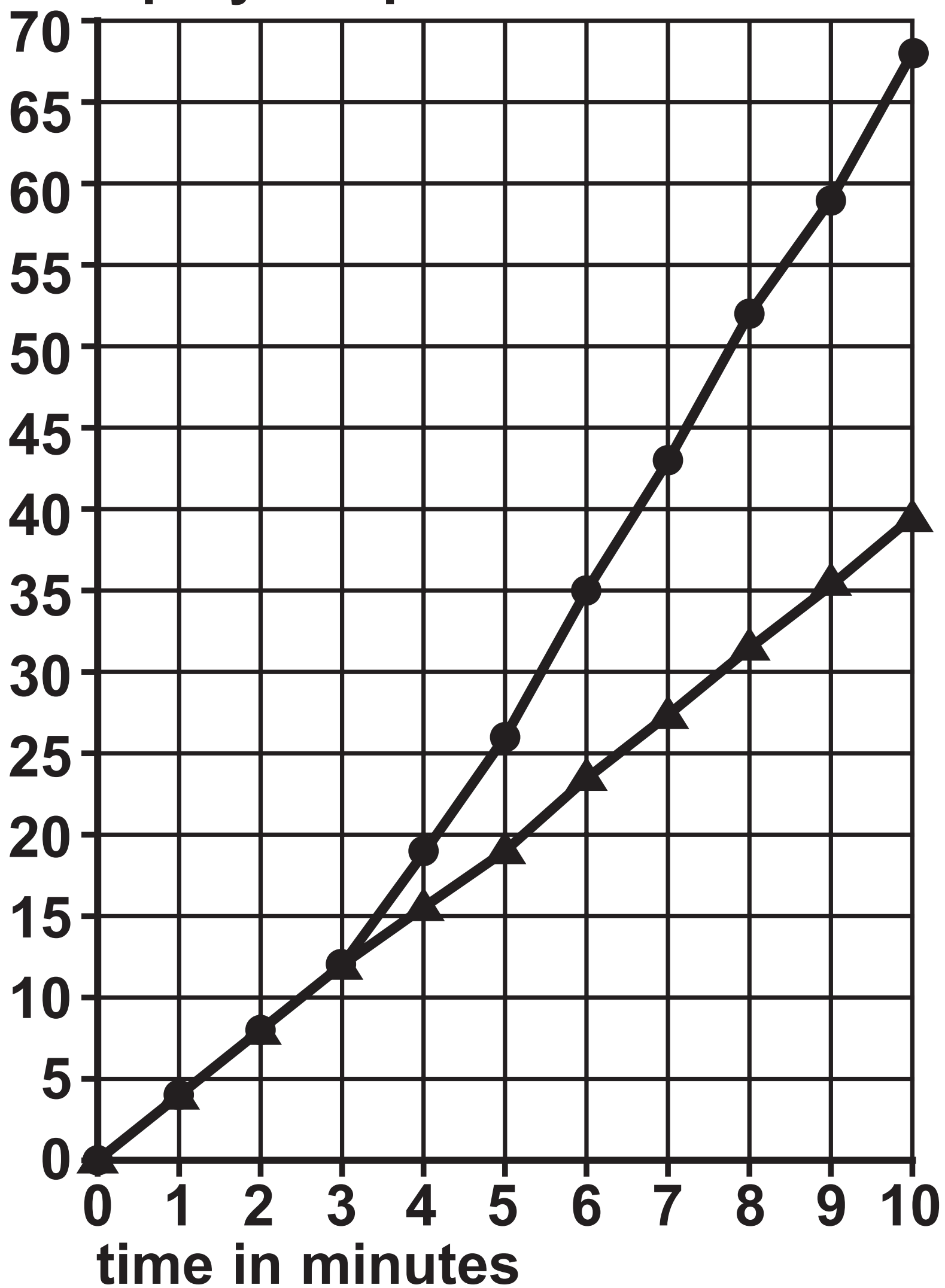
FIGURE 3

—●— fan switched on after three minutes

—▲— fan not switched on

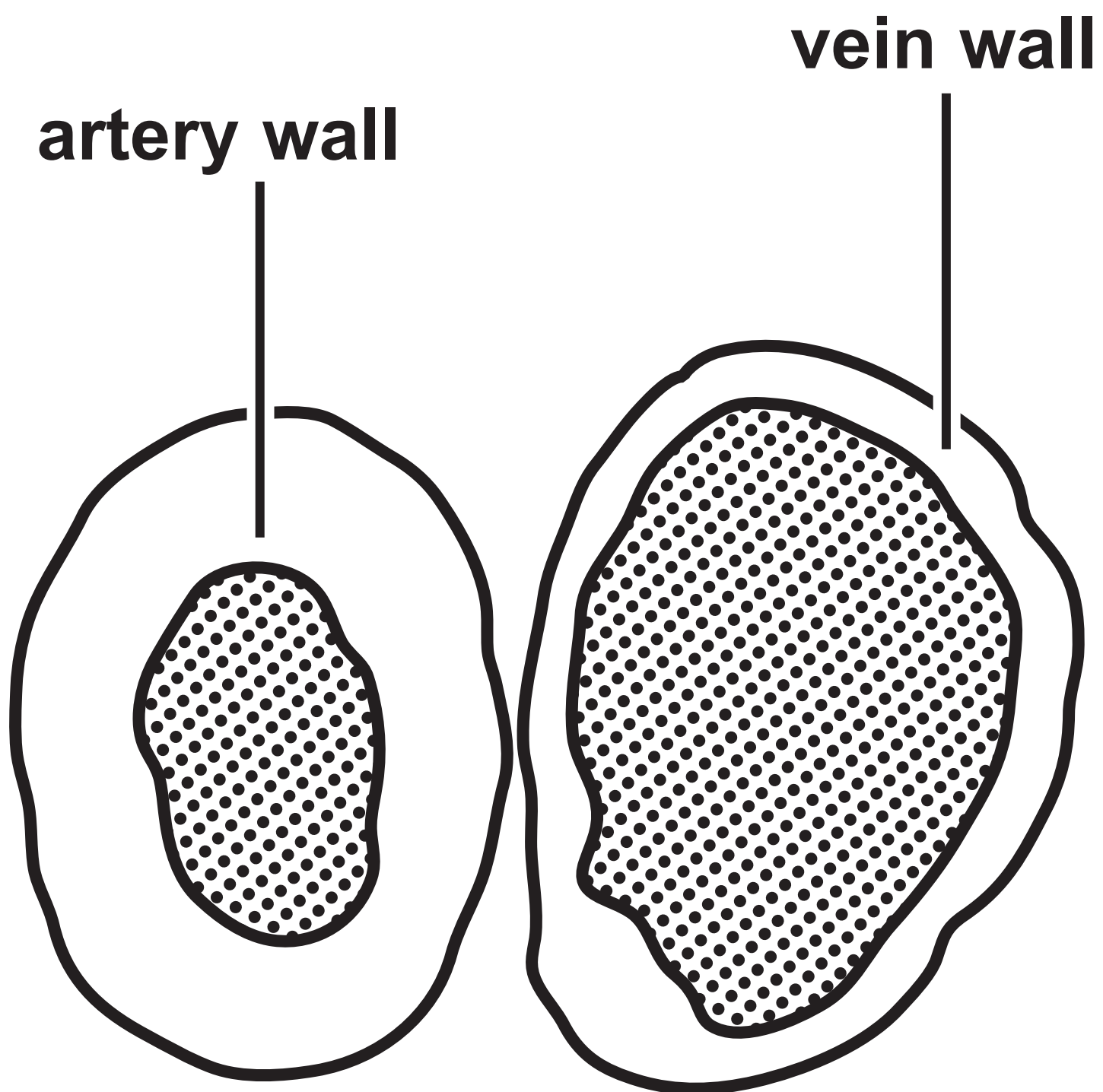
volume of water

taken up by the plant in mm^3

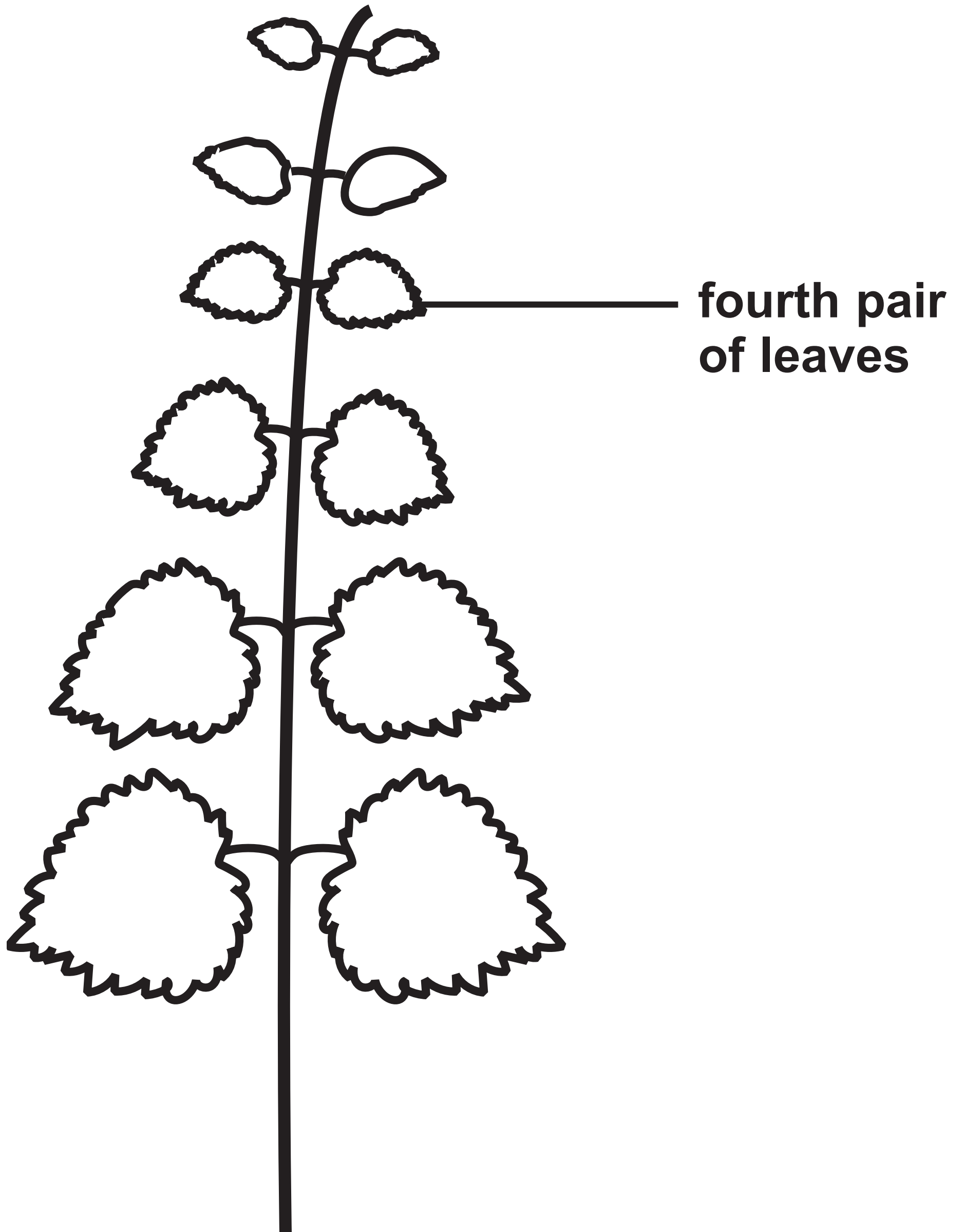


Question 3(a)

FIGURE 4



Question 4(a)

FIGURE 5

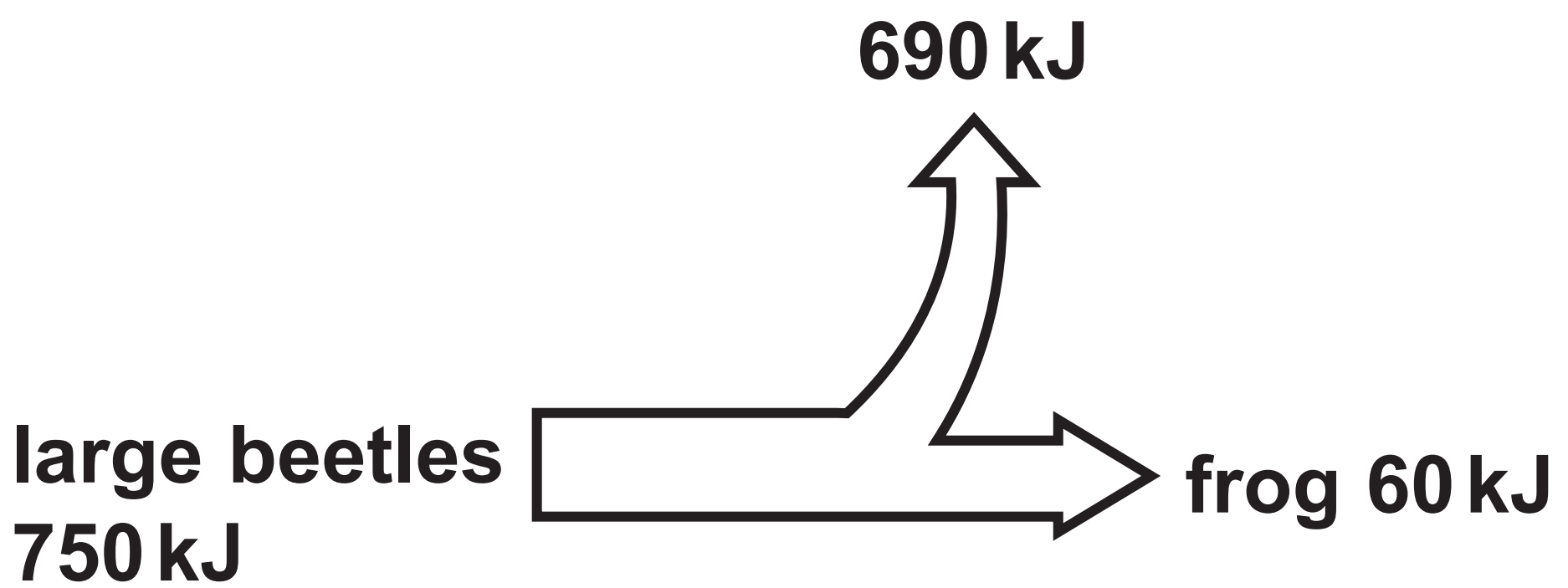
Question 4(b)

FIGURE 6

| nettle plant | width of the leaf in millimetres (mm) | |
|-----------------|--|-------------------------|
| | area A (in shade) | area B (in sunlight) |
| 1 | 45 | 33 |
| 2 | 50 | 25 |
| 3 | 48 | 27 |
| 4 | 52 | 48 |
| 5 | 47 | 28 |
| mean | 48 | 28 |

Question 4(c)(ii)

FIGURE 7



Question 5(b)

FIGURE 9

dead animals and plants $\xrightarrow{\text{X}}$ ammonia $\xrightarrow{\text{Y}}$ nitrates

Question 6(c)

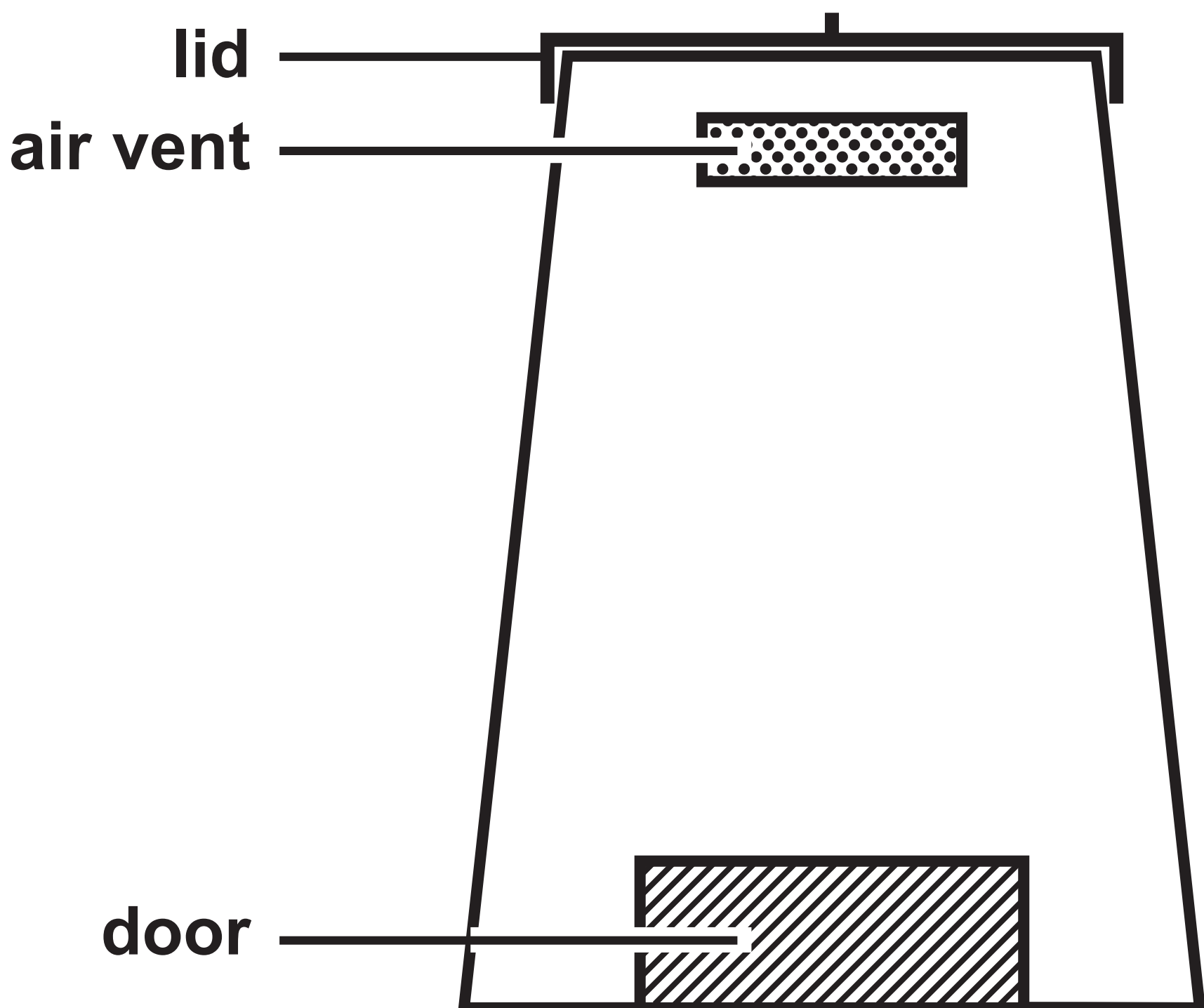
FIGURE 10

| blood test | woman's result | normal range |
|----------------------|----------------------------------|---|
| TSH level | 5.6 mU/l | 0.4 to 4.9 mU/l |
| thyroxine level | 27.5 pmol/l | 9.0 to 21.0 pmol/l |
| red blood cell count | 5.2×10^6 cells/ μ l | 4.2 to 5.4×10^6 cells/ μ l |
| glucose level | 82.0 mg/dl | 72.0 to 99.0 mg/dl |

Question 7(a)

FIGURE 11

- add soil in between layers of vegetation
- mix the contents of the compost bin once a month to add air
- keep the lid on to prevent water entering



Question 8(a)(iii)

FIGURE 13

| type of exercise | heart rate in bpm | | | | |
|------------------|-------------------|-----------|------------|------------|------------|
| | 0 minutes | 5 minutes | 10 minutes | 15 minutes | 20 minutes |
| running | 90 | 156 | 168 | 180 | 180 |
| walking | 90 | 96 | 90 | 96 | 90 |

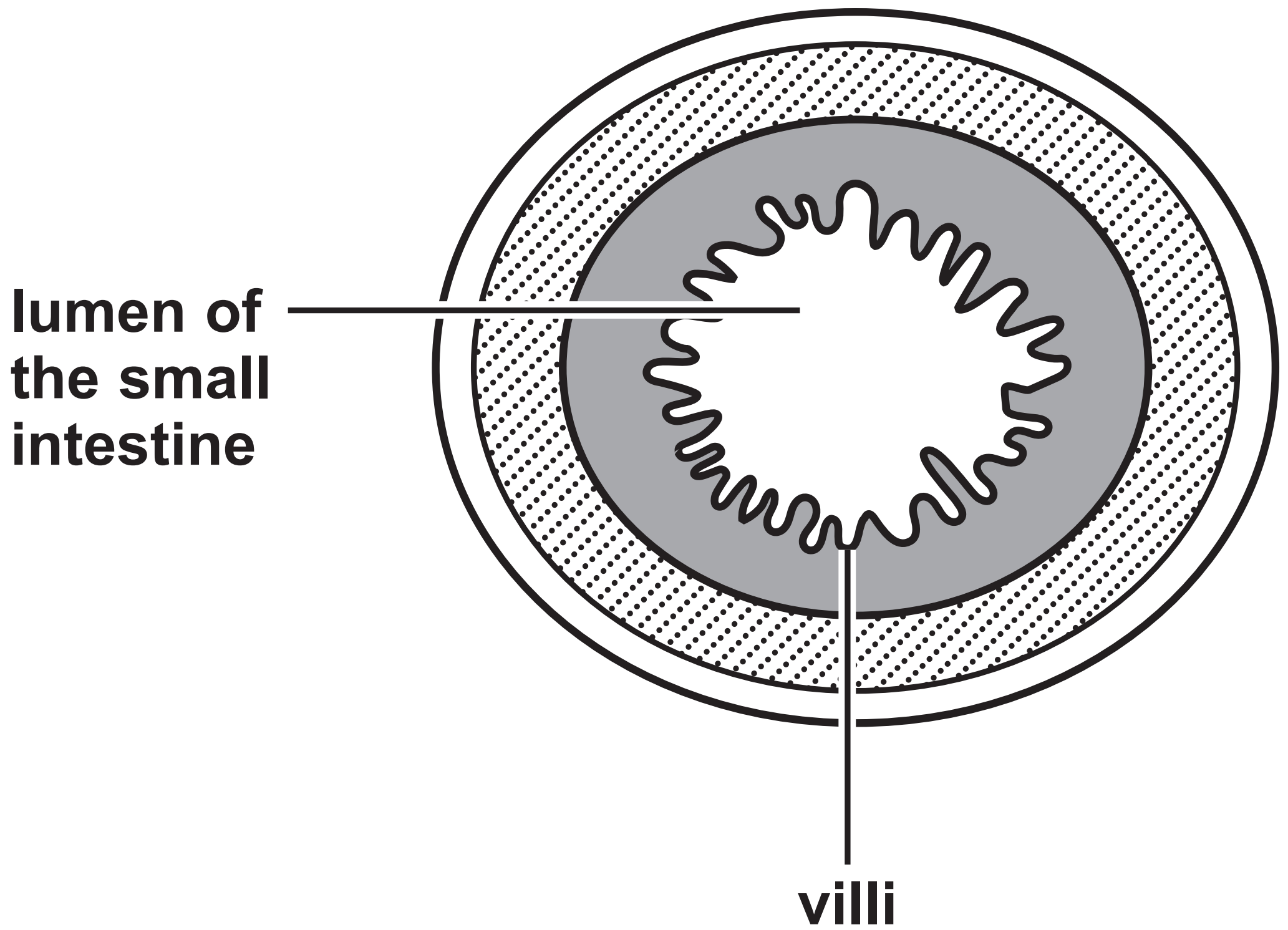
Question 9(a)

FIGURE 14

| month | March | July |
|--|--------------|-------------|
| number marked in the first sample | 18 | 12 |
| size of the second sample | 22 | 18 |
| number of recaptured animals | 8 | 10 |
| population size | 50 | |

Question 10(b)(ii)

FIGURE 15



Question 1(b)

(Source adapted from: © Manfred Ruckszio/Shutterstock)

Question 3(a)

(Source adapted from: © The University of Kansas Medical Center)

Question 4

(Source adapted from: © Alila Medical Media/Shutterstock)

Question 5(a)

(Source adapted from: © Nigel Downer/Science Photo Library)

Question 10(b)(ii)

(Source adapted from: © Science Photo Library C047/6177)